



Beaufort County
Public Works
Stormwater Infrastructure
Project Summary

Project Summary: Honeysuckle Lane

Activity: Routine/Preventive Maintenance

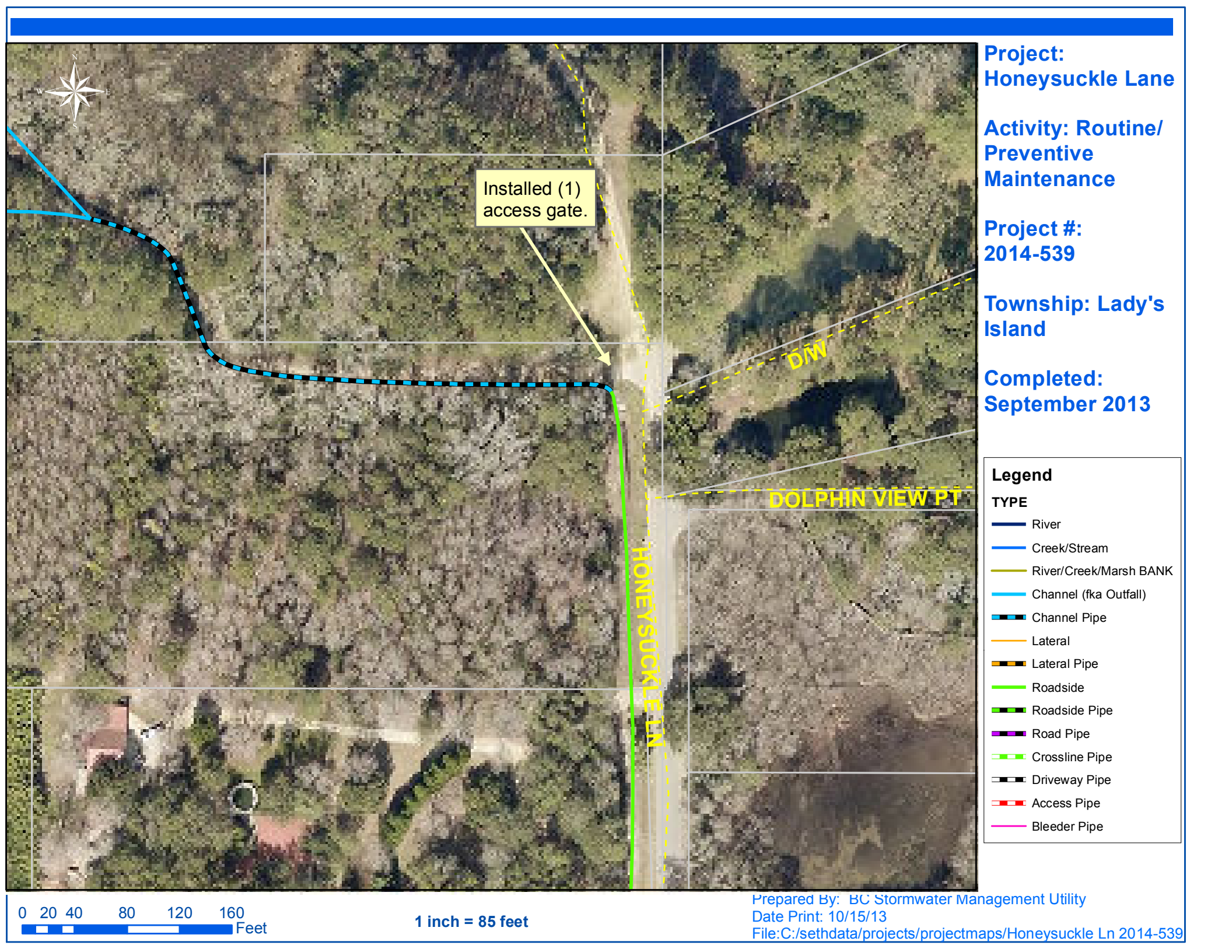
Narrative Description of Project:

Completion: Sep-13

Replaced (1) access gate.

2014-539 / Honeysuckle Lane	Labor Hours	Labor Cost	Equipment Cost	Material Cost	Contractor Cost	Indirect Labor	Total Cost
AGI / Access Gate - Installed	10.0	\$229.34	\$18.10	\$175.18	\$0.00	\$149.55	\$572.16
AUDIT / Audit Project	0.5	\$10.23	\$0.00	\$0.00	\$0.00	\$6.62	\$16.85
2014-539 / Honeysuckle Lane	10.5	\$239.57	\$18.10	\$175.18	\$0.00	\$156.16	\$589.01
Sub Total							
Grand Total	10.5	\$239.57	\$18.10	\$175.18	\$0.00	\$156.16	\$589.01

(Pictures Not Available)



Project:
Honeysuckle Lane

**Activity: Routine/
Preventive
Maintenance**

Project #:
2014-539

**Township: Lady's
Island**

Completed:
September 2013

Legend

TYPE

- River
- Creek/Stream
- River/Creek/Marsh BANK
- Channel (fka Outfall)
- Channel Pipe
- Lateral
- Lateral Pipe
- Roadside
- Roadside Pipe
- Road Pipe
- Crossline Pipe
- Driveway Pipe
- Access Pipe
- Bleeder Pipe

0 20 40 80 120 160
Feet

1 inch = 85 feet

Prepared By: BC Stormwater Management Utility
Date Print: 10/15/13
File: C:/sethdata/projects/projectmaps/Honeysuckle Ln 2014-539